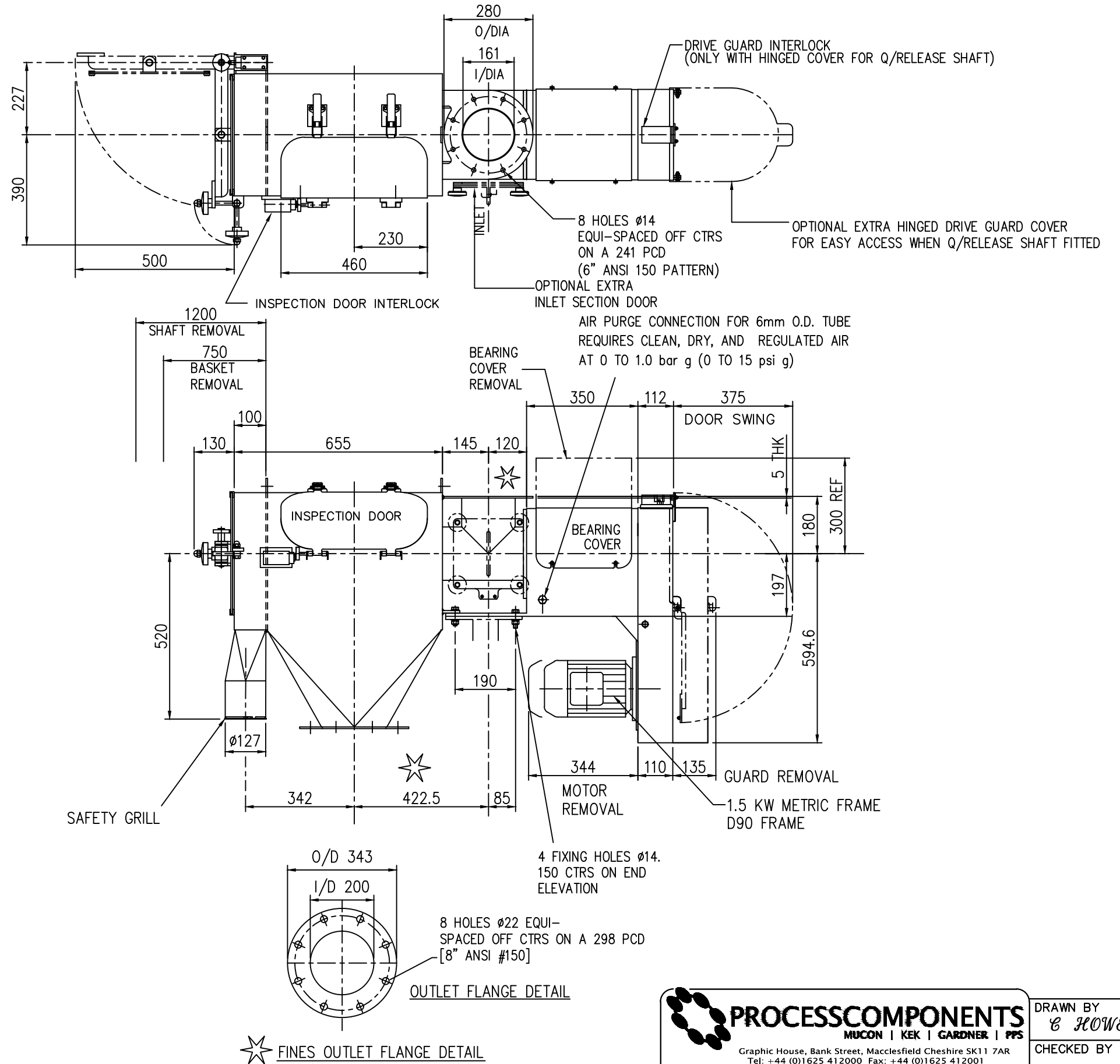
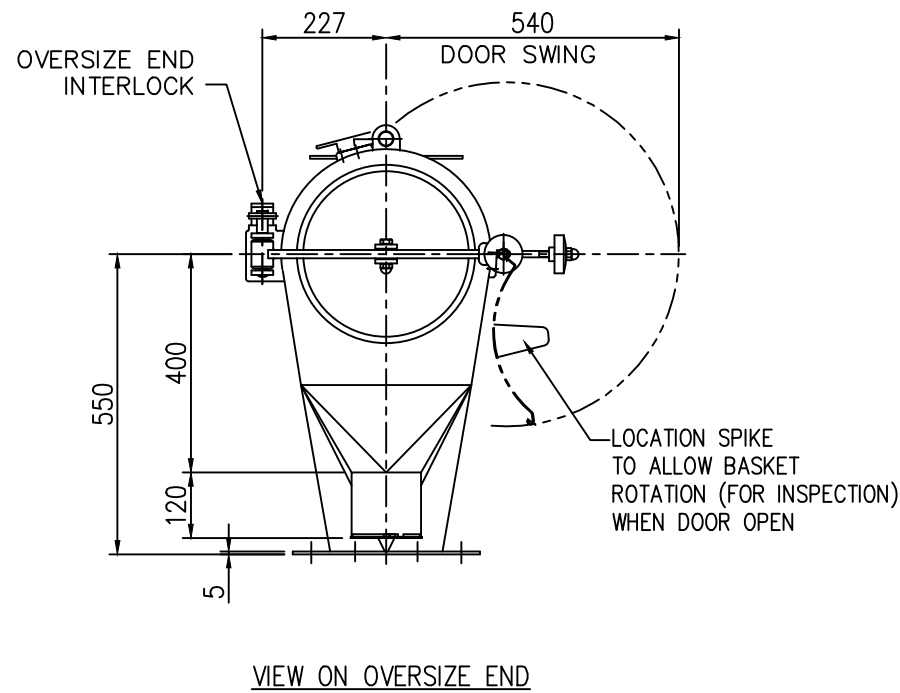




- NOTES:**
- 1) INLET & OUTLET CONNECTIONS MUST BE SUITABLY GUARDED BY CLIENT TO PREVENT OPERATOR ACCESS TO ROTATING/MOVING PARTS IN LINE WITH RELEVANT SAFETY REGULATIONS (BS EN 294/BS5304:1988 ETC)
 - 2) ALL SAFETY INTERLOCKS MUST BE WIRED INTO MOTOR CONTROL CIRCUIT TO PREVENT THE MOTOR RUNNING OR DE-ENERGISE THE MOTOR IF ALREADY RUNNING SHOULD THE INTERLOCKS BE ACTUATED BY OPENING ANY DOOR REFER TO INSTRUCTION MANUAL INTERLOCKS PROVIDED WITH 1 PAIR N/C CONTACTS AND 1 PAIR N/O CONTACTS
 - 3) SCREEN AREA: 0.19m²(K500C)
 - 4) APPROX NET WEIGHT: 200kg
 - 5) SIFTER SPEED 700 RPM ANTI-CLOCKWISE ROTATION WHEN VIEWED FROM OVERSIZE END

DO NOT SCALE DRAWING - IF IN DOUBT ASK



PROCESSCOMPONENTS
 MUCON | KEK | GARDNER | PPS
 Graphic House, Bank Street, Macclesfield Cheshire SK11 7AR
 Tel: +44 (0)1625 412000 Fax: +44 (0)1625 412001
 Email: sales@pro-components.com Web: www.pro-components.com

DRAWN BY <i>E HOWEL</i>
CHECKED BY
APPROVED BY <i>RS</i>
SCALE 1:10
DATE 23/10/00

THIS DRAWING IS THE PROPERTY OF PROCESS COMPONENTS LTD AND MUST NOT BE COPIED OR SHOWN TO A THIRD PARTY WITHOUT THE WRITTEN CONSENT OF THIS COMPANY. ©

DRAWING SPECIFICATIONS
UNLESS OTHERWISE STATED

Screw threads to BS3643
 ISO Metric Coarse Pitch Series (Medium Fit)
 Surface Finish to BS1134 in micrometres
 Welding Symbols to BS499 Part 2
 Dimension & Geometrical Tolerances to BS308
 Limits & Fits to BS4500
 Remove all sharp edges and burrs

TOLERANCE SPECIFICATIONS
UNLESS OTHERWISE STATED

SHEET METAL DIMENSIONS 0 to 300 ± 1.00 300 to 1000 ± 2.00 Over 1000 ± 3.00	MACHINED DIMENSIONS 0 to 150 ± 0.30 Over 150 ± 0.60
UNMACHINED DIMENSIONS 0 to 150 ± 0.50 Over 150 ± 1.50	

ALL DIMENSIONS IN MILLIMETRES

THIRD ANGLE PROJECTION ☉

For all material, weld and finish specifications refer to purchase/works order unless stated otherwise

ISSUE A
ISSUED FOR MANUFACTURE

CH 23/10/00

TITLE
K500C SIFTER R.H. DOOR
CANTILEVER SHAFT

DRAWING No
A2 DS502

ISSUE
A