

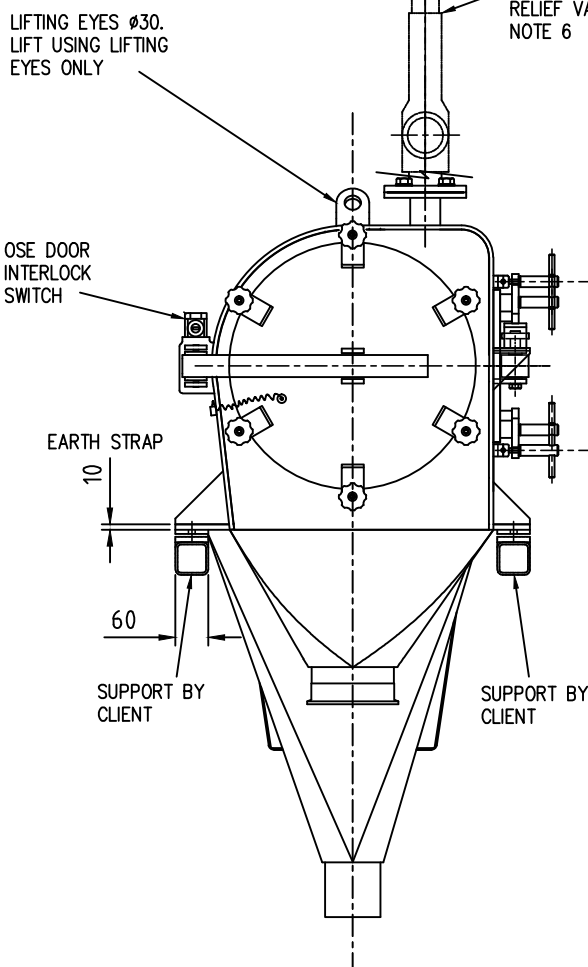
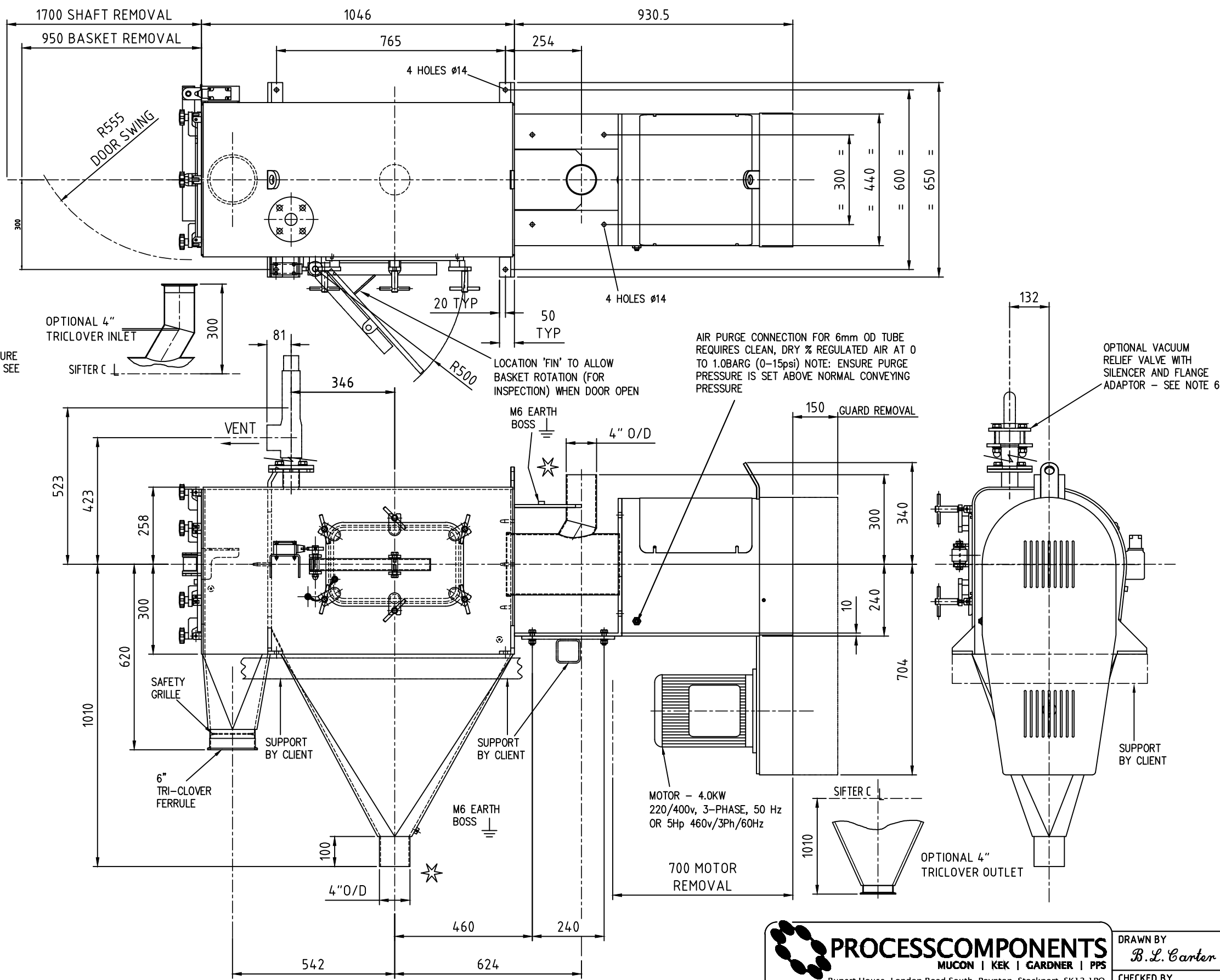
**NOTES:**

- 1) INLET & OUTLET CONNECTIONS MUST BE SUITABLY GUARDED BY CLIENT TO PREVENT OPERATOR ACCESS TO ROTATING/MOVING PARTS, IN LINE WITH RELEVANT SAFETY REGULATIONS BS EN ISO 13857:2008 / PD 5304:2014 ETC.
- 2) ALL SAFETY INTERLOCKS MUST BE WIRED INTO MOTOR CONTROL CIRCUIT TO PREVENT THE MOTOR RUNNING, OR DE-ENERGISE THE MOTOR IF ALREADY RUNNING SHOULD THE INTERLOCKS BE ACTUATED BY OPENING ANY DOOR. REFER TO INSTRUCTION MANUAL. INTERLOCKS PROVIDED WITH 1 PAIR N/C CONTACTS & 1 PAIR N/O CONTACTS.
- 3) SCREEN AREA: 0.59m<sup>2</sup> (K800C)
- 4) SIFTER SPEED: 600 RPM - ACW ROTATION WHEN VIEWED FROM OVERSIZE END
- 5) FOR PRESSURE MACHINES:  
 NORMAL WORKING PRESSURE: 0.7 BAR (10 psi)  
 PRESSURE RELIEF VALVE SET AT 0.8 BAR (12 psi)
- 5A) FOR VACUUM MACHINES:  
 NORMAL WORKING VACUUM: 0.7 BAR (10 psi)  
 VACUUM RELIEF VALVE SET AT 0.8 BAR (12 psi)

6) STANDARD MACHINE SUPPLIED WITH BLANKED UPSTAND. CLIENT MUST PROTECT SIFTER FROM OVERPRESSURE ELSEWHERE. RELIEF PRESSURE 0.8 BAR (12 PSI) MAX WHEN FITTED. SAFETY RELIEF VALVE OUTLET CONNECTION IS 2-1/2" BSP FEMALE. CLIENT TO ENSURE THAT THE POTENTIAL DISCHARGE IS PIPED TO A SAFE AREA. IN THE EVENT OF OVERPRESSURE AIR AND PRODUCT MAY BE RELEASED WITHOUT WARNING.

WEIGHT - APPROX 600 kg NET.

DO NOT SCALE DRAWING - IF IN DOUBT ASK



THIS DRAWING IS THE PROPERTY OF PROCESS COMPONENTS LTD AND MUST NOT BE COPIED OR SHOWN TO A THIRD PARTY WITHOUT THE WRITTEN CONSENT OF THIS COMPANY. ©

**DRAWING SPECIFICATIONS**  
UNLESS OTHERWISE STATED

Screw threads to BS3643  
ISO Metric Coarse Pitch Series (Medium Fit)  
Surface Finish to BS1134 in micrometres  
Welding Symbols to BS499 Part 2  
Dimension & Geometrical Tolerances to BS308  
Limits & Fits to BS4500  
Remove all sharp edges and burrs

**TOLERANCE SPECIFICATIONS**  
UNLESS OTHERWISE STATED

SHEET METAL DIMENSIONS 0 to 300 ± 1.00 300 to 1000 ± 2.00 Over 1000 ± 3.00	MACHINED DIMENSIONS 0 to 150 ± 0.30 Over 150 ± 0.60
ANGULAR DIMENSIONS ± 0'-30'	UNMACHINED DIMENSIONS 0 to 150 ± 0.50 Over 150 ± 1.50

**ALL DIMENSIONS IN MILLIMETRES**

THIRD ANGLE PROJECTION

For all material, weld and finish specifications refer to purchase/works order unless stated otherwise

ISSUE A  
FIRST ISSUE  
PB 14/09/07

**PROCESSCOMPONENTS**  
MUCON | KEK | GARDNER | PPS  
Rupert House, London Road South, Poynton, Stockport, SK12 1PQ  
Tel: +44 (0)1625 412000 Fax: +44 (0)1625 412001  
Email: sales@pro-components.com Web: www.pro-components.com

TITLE  
K800C INLINE RH HINGED DOOR

DRAWING No  
A2 DS547

ISSUE  
A

DRAWN BY  
B.L. Carter

CHECKED BY

APPROVED BY  
[Signature]

SCALE  
1:10

DATE  
21/08/07